

COMMERCIAL TOBACCO

Commercial tobacco includes all tobacco that is processed for use in tobacco products that are regulated by the Smoke Free Ontario Act.



COMMERCIAL TOBACCO

Examples include:

- Smokeless tobacco



COMMERCIAL TOBACCO

Examples include:

- Smokeless tobacco
- Cigars, Cigarillos and Pipe Tobacco



COMMERCIAL TOBACCO

Examples include:

- Smokeless tobacco
- Cigars, Cigarillos and Pipe Tobacco
- Cigarettes



COMMERCIAL TOBACCO

Examples include:

- Smokeless tobacco
- Cigars, Cigarillos and Pipe Tobacco
- Cigarettes
- Hookahs and Bidis



COMMERCIAL TOBACCO

For the remainder of this presentation the tobacco we are referring to is commercial tobacco.



SMOKELESS TOBACCO

There are three main types of smokeless tobacco:



SMOKELESS TOBACCO

There are three main types of smokeless tobacco:

- Snus, which are small pouches used under the lip to administer nicotine through absorption through the mouth



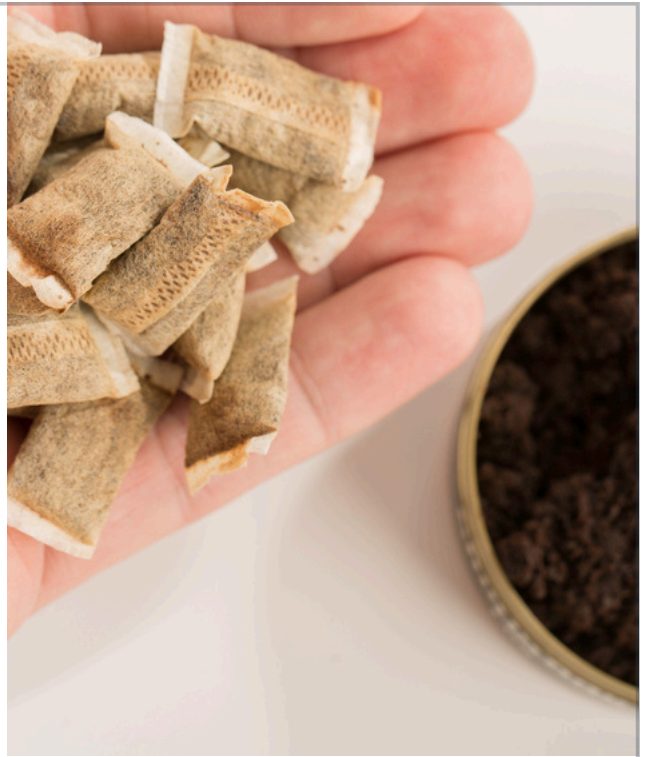
SMOKELESS TOBACCO

- Snuff, which is fine ground tobacco that is sniffed into the nose where nicotine is absorbed through the nasal cavity



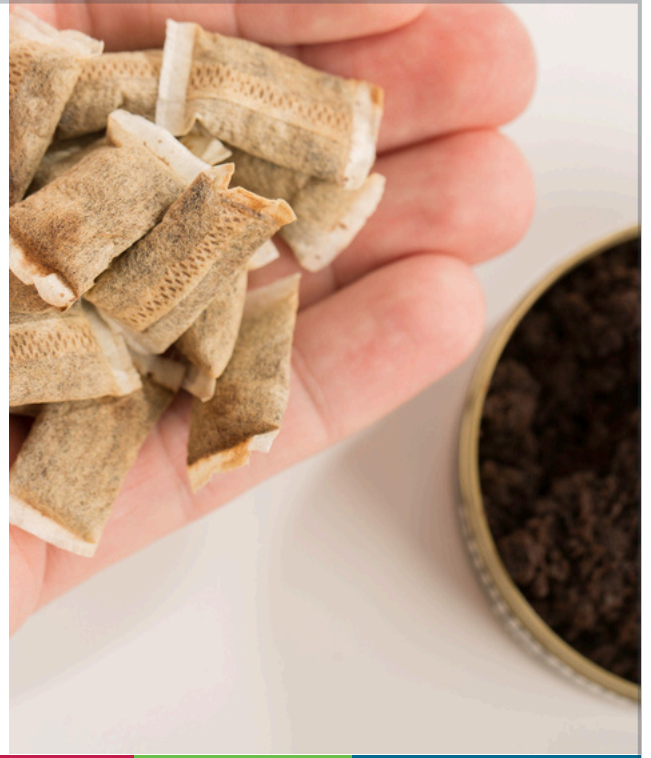
SMOKELESS TOBACCO

- And Chew, which is shredded moist tobacco held in the lips loosely where nicotine enters the body by absorbing through the mouth



HEALTH RISKS OF SMOKELESS TOBACCO

- Smokeless tobacco is associated with health consequences such as cancer of the mouth, esophagus and pancreas, tooth decay, rot and loss, gum disease, and nicotine poisoning.



CIGARS, CIGARILLOS AND PIPE TOBACCO

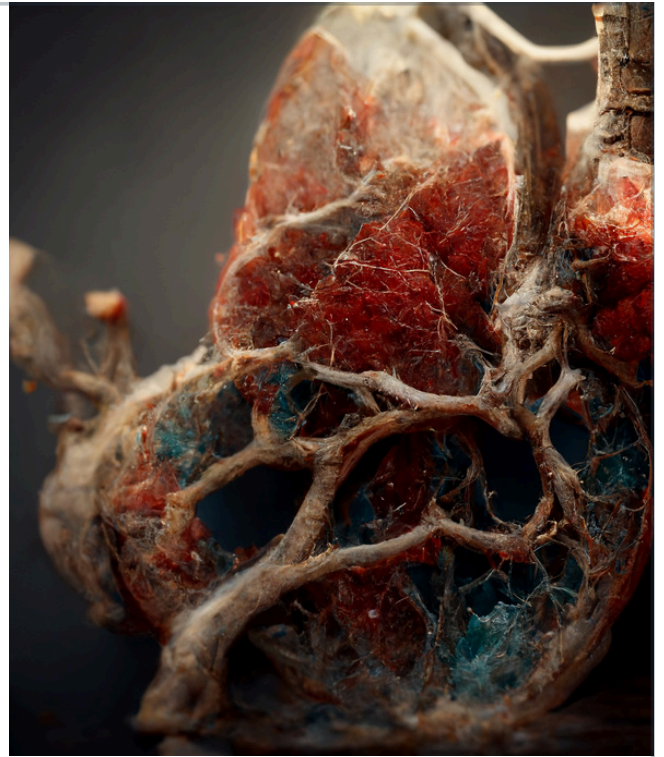
These products are smoked but sometimes not inhaled.

- Cigars are large thick rolls of tobacco wrapped in other tobacco leaves.
- Cigarillos are thinner and sometimes longer cigars.
- Pipe Tobacco is typically sold loose and is packed in a pipe.



HEALTH RISKS

Like smokeless tobacco, these products are linked to lung, mouth, esophagus, and throat cancers. They are also associated with gum disease and tooth loss, as well as heart and lung disease.



CIGARETTES AND THEIR HEALTH RISKS



CIGARETTES AND THEIR HEALTH RISKS

Heart disease and heart attack

Blood clots and limb amputation

Chronic obstructive pulmonary disorder

Erectile dysfunction

Lung, bladder, throat, cervical, colon, liver kidney cancers

Stroke

Oral/mouth cancer

Blood cancer



CIGARETTES AND THEIR HEALTH RISKS

Heart disease and heart attack

Blood clots and limb amputation

Chronic obstructive pulmonary disorder

Erectile dysfunction

Lung, bladder, throat, cervical, colon, liver kidney cancers

Stroke

Oral/mouth cancer

Blood cancer



CIGARETTES AND THEIR HEALTH RISKS

Heart disease and heart attack

Blood clots and limb amputation

Chronic obstructive pulmonary disorder

Erectile dysfunction

Lung, bladder, throat, cervical, colon, liver kidney cancers

Stroke

Oral/mouth cancer

Blood cancer



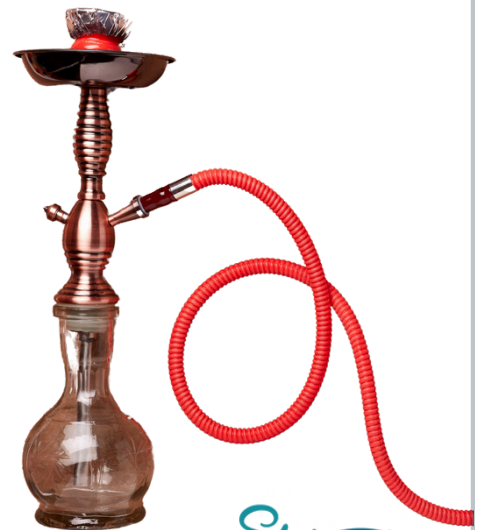
HOOKAHS AND BIDIS

A hookah is a type of water pipe that is used to smoke specialty tobacco that is often flavoured. Bidis are small thin hand rolled tobacco cigarettes wrapped in tendu or temburni leaves that come either flavoured or unflavoured and are often secured with colourful string.



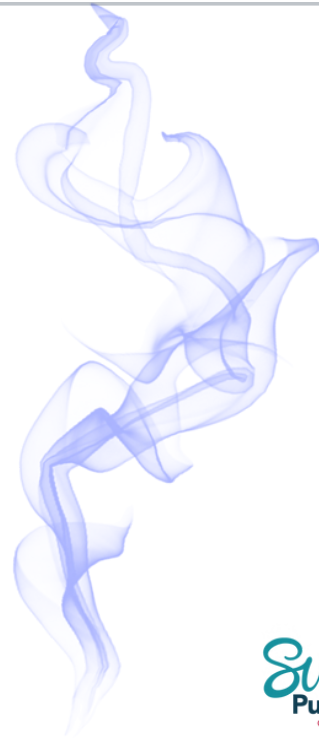
HEALTH RISKS - BIDIS AND HOOKAHS

The health risk of Bidis include oral, throat, lung and stomach cancer, heart attack and chronic lung disease while the health risks of Hookahs include lung, bladder and oral cancer as well as heart disease. Both, of course, carry a risk of nicotine addiction.



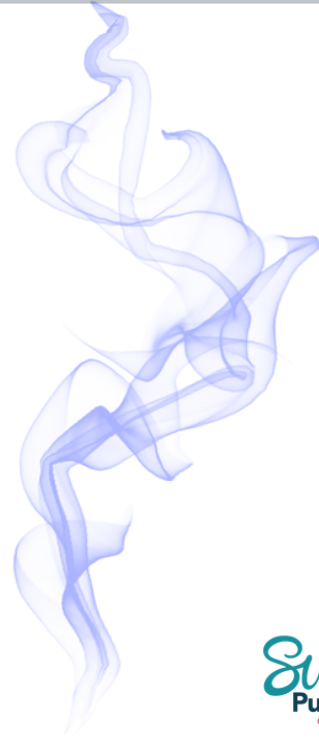
SECOND HAND SMOKE

Secondhand smoke is the smoke from burning tobacco products. It comes from both the smoke that is exhaled by the person smoking and the cigarette itself as it idly burns.



SECOND HAND SMOKE

As many of the same chemicals that are inhaled while smoking are also in secondhand smoke, the health risks for people who inhale secondhand smoke are similar to the health risks of people who smoke themselves.



TOBACCO OR NICOTINE ADDICTION

Nicotine re-wires our brains and can cause psychological and physical dependence – otherwise known as addiction.



TOBACCO OR NICOTINE ADDICTION

- This rewiring is especially powerful in the brains of people under the age of 25 because it can set your minds up for a lifetime of dependence.
- This is particularly important to tobacco and vaping companies as it means a lifetime customer.



TOBACCO INDUSTRY & LIES

The tobacco industry was confronted by the US government in 1994. Seven tobacco executives testified under oath that nicotine was not addictive and that evidence was unclear that cigarettes cause lung cancer and heart disease.



TOBACCO INDUSTRY & LIES

This was all part of a coordinated effort by Big Tobacco to hide the truth about the dangers of cigarettes in a plan later titled Operation Berkshire.



TOBACCO INDUSTRY & LIES

They were all later found to be lying by the government. This led to the companies being forced to pay for ads on TV and in newspapers telling the public that they lied and that cigarettes were harmful.



TOBACCO INDUSTRY & LIES

The tobacco companies also had to pay for the medical bills of millions of individuals from 46 states suffering from the adverse effects of smoking. This was known as the Master Settlement Agreement (MSA) of 1998.



While sometimes secretive about their stakes in the vaping industry...

VAPING INDUSTRY

- The big tobacco companies such as Imperial brands, Philip Morris, British American Tobacco and Japan Tobacco International all own vape companies.
- They are often secretive about their ownership in the vaping industry.



WRAP UP

In this module, we learned:

- The difference between commercial and sacred tobacco
- The types of tobacco products that use leaf tobacco
- The health risks associated with smoking and second hand smoke
- How the Tobacco Industry operates, how they lied about the harms of cigarettes and how they now own most vaping companies.

